

CAR MEDICS

37 Rigney Street
Kingston, ON K7K 6Z3

613-547-8473

www.carmedics.ca



Brake Inspection

Customer:	Car Medics Customer	License:	AVPXxxx
Vehicle:	2013 Dodge Grand Caravan	VIN:	2C4RDGDG6DR663xxx
Inspection date:	6/25/2020	Odometer:	in: 114,990- km
Repair Order #:	127441	Technician:	Shawn McCarthy, lic. # 310S-400151000

We have inspected your vehicle with the following results:



Shawn McCarthy, lic. # 310S-400151000, Technician



Peter H., Service Advisor

Good

Inspection Items	Observation	Action
Belt(s)	OK A/C Yes (yes or no) List any worn/cracked belts__	
Engine Coolant	OK	
Front Brake Calipers	OK	
Tire Changeover/Storage	Observation	Action
TPMS Reset	Not required this visit	

Needs Immediate Attention

Inspection Items	Observation	Action
------------------	-------------	--------

Needs Immediate Attention

Horn and Exterior Lights	<p>Fog light, left Fog light, right</p> <p>If any bulbs replaced, please list below: Bulb part # ___ Quantity ___ Location installed ___</p> <p>Bulb part # ___ Quantity ___ Location installed ___</p> <p>Bulb part # ___ Quantity ___ Location installed ___</p>	Recommend replacing bulb
Winter Tires	<p>Low in tread</p> <p>Left Front: 0/32" LF Comment: ___</p> <p>Right Front: 0/32" RF Comment: ___</p> <p>Left Rear: 3/32" LR Comment: ___</p> <p>Right Rear: 3/32" RR Comment: ___</p> <p>Tire size (if recommended): 22565r17 Tire brand (if recommended): ___</p> <p>Image(s): https://tinyurl.com/y7th65u2 <i>Right-hand mouse-click on link and select 'Open Link in New Tab'</i></p>	Replace all 4 tires
Engine Oil	<p>Oil is dirty</p> <p>Image(s): https://tinyurl.com/ycfduldo <i>Right-hand mouse-click on link and select 'Open Link in New Tab'</i></p>	<p>Replace engine oil</p> <p>Perform Engine Oil Flush</p>
Brake Fluid	<p>Brake fluid low Brake fluid dirty</p> <p>2% Moisture contamination (maximum 2% for safe braking)</p> <p>Image(s): https://tinyurl.com/yd9sb37p <i>Right-hand mouse-click on link and select 'Open Link in New Tab'</i></p>	Recommend brake fluid flush
Warning Lamps	Check Engine Light ON	Recommend diagnostic
Front Brakes Pads and Rotors	<p>Front brake pads are metal on metal Front brake pads are seized in holders Front brake pads have uneven wear Front brake pads separating Front brake rotors rusted Front brake pad thickness remaining 0mm</p> <p>Image(s): https://tinyurl.com/y9p8bmot https://tinyurl.com/ya5wyu5d https://tinyurl.com/ycreyfha <i>Right-hand mouse-click on link and select 'Open Link in New Tab'</i></p>	Repair/replace today



Your Source of Vehicle Maintenance Knowledge. For More Details Click [Here](#)

Needs Immediate Attention

Rear Brakes Pads and Rotors	<p>Rear brake pads are metal on metal Rear brake pads are seized in holders Rear brake pads have uneven wear Rear brake rotors rusted Rear brake pad thickness remaining 0mm</p> <p><i>Image(s):</i> https://tinyurl.com/yahw5o8w https://tinyurl.com/y9nhp9ev <i>Right-hand mouse-click on link and select 'Open Link in New Tab'</i></p>	
Rear Brake Calipers or Wheel Cylinders	Caliper slider pins seized	Service rear brake calipers, pads and rotors today

Needs Attention Today

Inspection Items	Observation	Action
Power Steering Fluid	<p>Power steering fluid dirty</p> <p><i>Image(s):</i> https://tinyurl.com/yc3dqra5 <i>Right-hand mouse-click on link and select 'Open Link in New Tab'</i></p>	Recommend flushing power steering fluid
Other/Fluid Leaks/Noises/Steering/Suspension, etc.	<p>Other recommendation One of the rims is coated in brake dust</p> <p><i>Image(s):</i> https://tinyurl.com/yas8n52k <i>Right-hand mouse-click on link and select 'Open Link in New Tab'</i></p>	

Other Findings/Comments

Inspection Items	Observation	Action
Transmission Fluid	No dipstick to inspect level or fluid condition; This is normal as not all vehicles have dipsticks.	



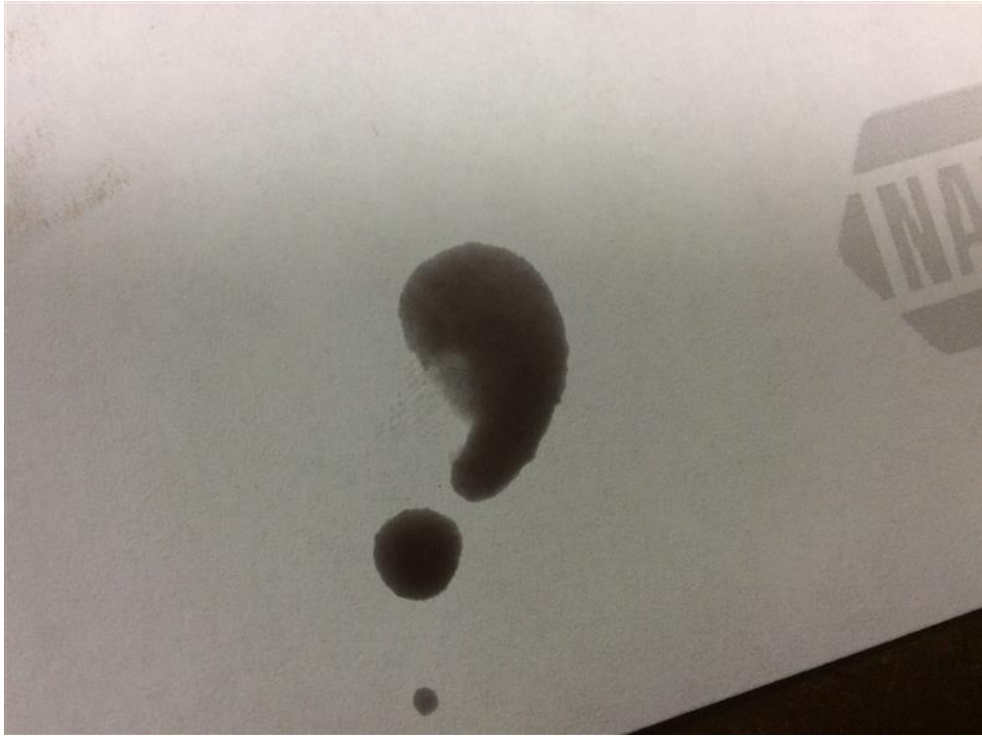
Additional Information

INFORMATION - TIRE AND LOADING / PNEUS ET CHARGEMENT	
SEATING CAPACITY / NOMBRE DE PLACES - TOTAL 7 FRONTIÈRE 2	
THE COMBINED WEIGHT OF OCCUPANTS AND CARGO SHOULD NEVER EXCEED LE POIDS TOTAL DES OCCUPANTS ET DU CHARGEMENT NE DOIT JAMAIS DÉPASSER	
TIRE SIZE / PNEU	REAR / ARRIÈRE
VS DU PNEU D'ORIGINE	225/65R17
INFLATION PRESSURE / GONFLAGE À FROID	250 kPa / 36 psi
FRONT / AVANT	225/65R17
	250 kPa / 36 psi
NEPS MANUAL / CONSULTEZ LE GUIDE DE L'AUTOMOBILISTE	

Winter Tires



Engine Oil



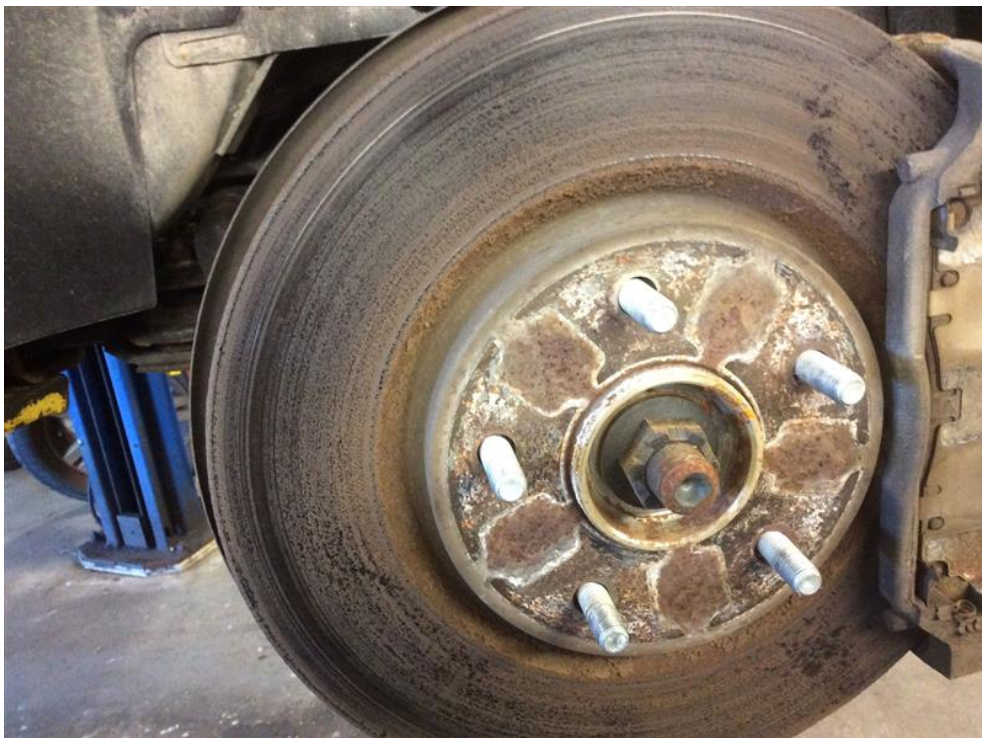
Power Steering Fluid



Brake Fluid



Front Brakes Pads and Rotors



Front Brakes Pads and Rotors



Your Source of Vehicle Maintenance Knowledge. For More Details Click [Here](#)



Front Brakes Pads and Rotors



Rear Brakes Pads and Rotors



Rear Brakes Pads and Rotors



Other/Fluid Leaks/Noises/Steering/Suspension, etc.